



**GEARHEADS(POWERFUL TYPE)** Frame size 90mm sq. (3.54 in. sq.)

BALL BEARING TYPE

▶ **RATED TORQUE OF GEARHEAD**

MODEL	Speed(rpm)	500	300	200	120	100	60	50	30	20	15	10	9	6	5	3	2	1	
	Ratio	50Hz	3	5	7.5	12.5	15	25	30	50	75	100	150	166.7	250	300	500	750	1500
<b>L9VK□B</b>	kg-cm	16.5	27.5	41.3	62.1	74.5	112.2	134.6	200	200	200	200	200	200	200	200	200	200	200
<b>L9WK□B</b>	N-m	1.62	2.70	4.05	6.08	7.30	11.00	13.19	19.60	19.60	19.60	19.60	19.60	19.60	19.60	19.60	19.60	19.60	19.60
<b>L9V10D(DECIMAL)</b>	oz-in	229	382	574	862	1034	1558	1870	2777	2777	2777	2777	2777	2777	2777	2777	2777	2777	2777

With Decimal Gearhead

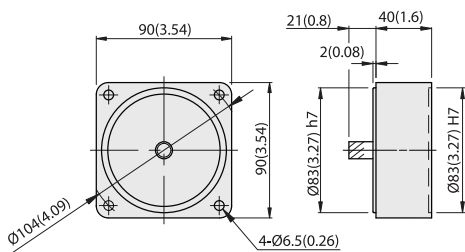
- \* The normal torque is that the motor and gearhead are directly coupled.
- \* Insert the denominator of reduction ratio in □ of gearhead model name.
- \* Actual rotation speed is 2~15% less than synchronous speed.
- \* ■Color indicates that the rotation of gearhead shaft is in opposite direction as output shaft of motor.

**DIMENSIONS**

Unit : mm(inch)

**DECIMAL GEARHEAD**

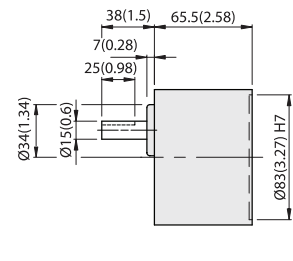
**L9V10D**



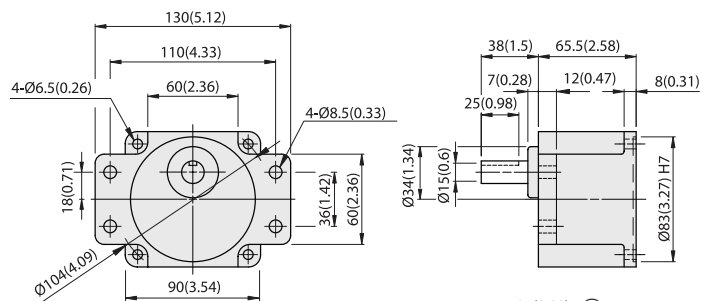
WEIGHT 0.6kg (1.3 lb)

**GEARHEAD**

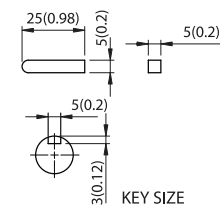
**L9VK□B**



**L9WK□B**

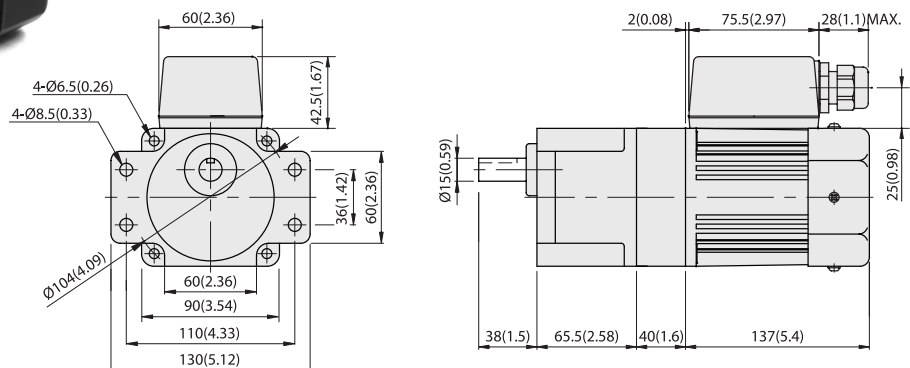


MODEL	GEAR RATIO	WEIGHT		BOLT
		kg	lb	
L9VK□B	1/3~1/200	1.5	3.3	M6x95
L9WK□B	1/3~1/200	1.6	3.5	M6xL25



KEY SIZE

**L9WK□B + L9V10D + L9R90P□HTB**



TERMINAL BOX TYPE  
REVERSIBLE MOTORS



**GEARHEADS(ULTRA POWERFUL TYPE)** Frame size 90mm sq. (3.54 in. sq.)

BALL BEARING TYPE

▶ **RATED TORQUE OF GEARHEAD**

MODEL	Speed(rpm)	500	300	200	120	100	60	50	30	20	15	10	9	6	5	3	2	1
	Ratio	50Hz	3	5	7.5	12.5	15	25	30	50	75	100	150	166.7	250	300	500	750
	60Hz	3.6	6	9	15	18	30	36	60	90	120	180	200	300	360	600	900	1800
<b>L9UK□B</b> <b>L9V10D(DECIMAL)</b>	kg-cm	16.5	27.5	41.3	62.1	74.5	112.2	134.6	224.4	300	300	300	300	300	300	300	300	300
	N-m	1.62	2.70	4.05	6.08	7.30	11.00	13.19	21.99	29.40	29.40	29.40	29.40	29.40	29.40	29.40	29.40	29.40
	oz-in	229	382	574	862	1034	1558	1870	3116	4166	4166	4166	4166	4166	4166	4166	4166	4166

With Decimal Gearhead

- \* The normal torque is that the motor and gearhead are directly coupled.
- \* Insert the denominator of reduction ratio in □ of gearhead model name.
- \* Actual rotation speed is 2~15% less than synchronous speed.
- \* ■Color indicates that the rotation of gearhead shaft is in opposite direction as output shaft of motor.

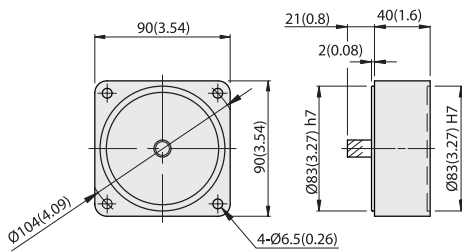
TERMINAL BOX TYPE  
REVERSIBLE MOTORS

**DIMENSIONS**

Unit : mm(inch)

**DECIMAL GEARHEAD**

**L9V10D**

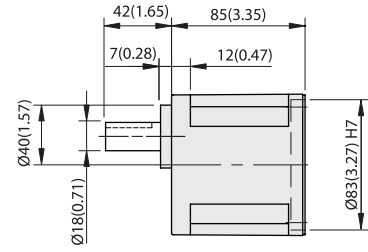
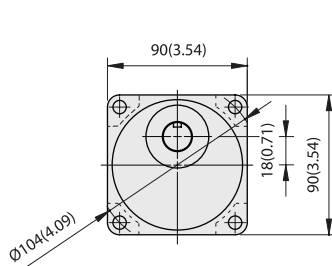


WEIGHT 0.6kg (1.3 lb)

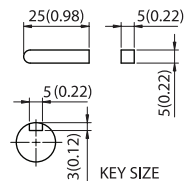


**GEARHEAD**

**L9UK□B**



MODEL	GEAR RATIO	WEIGHT		BOLT
		kg	lb	
L9UK□B	1/3~1/200	1.95	4.3	M6xL20



KEY SIZE



**L9UK□B + L9R90P□HTB**

